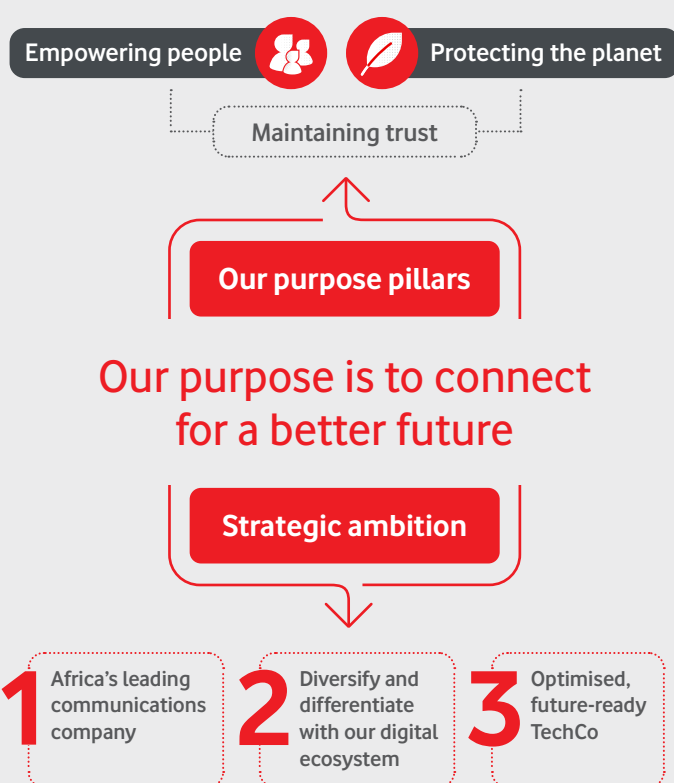


Who we are

Vodacom is a leading and purpose-driven African operator which offers connectivity, digital and financial services to its customers. Including Safaricom, the Group serves 203.1 million customers.

Over a rich 30-year history in the telecommunications industry, we have expanded our business from South Africa to include controlled operations in DRC, Egypt, Lesotho, Mozambique and Tanzania and have exposure to Kenya and Ethiopia through our associate holding in Safaricom. We are evolving from being a TelCo to Africa's leading TechCo, pioneering innovative solutions to shape the future of connectivity and technology.



We are listed on the JSE and A2X

Our market capitalisation was **R205 billion** as at 31 March 2024

Vodafone – one of the world's largest communications companies in terms of revenue – has a **65.1% shareholding** in Vodacom

Where we operate

Our operations reach over half a billion people and more than 40% of the African continent's gross domestic product (GDP).

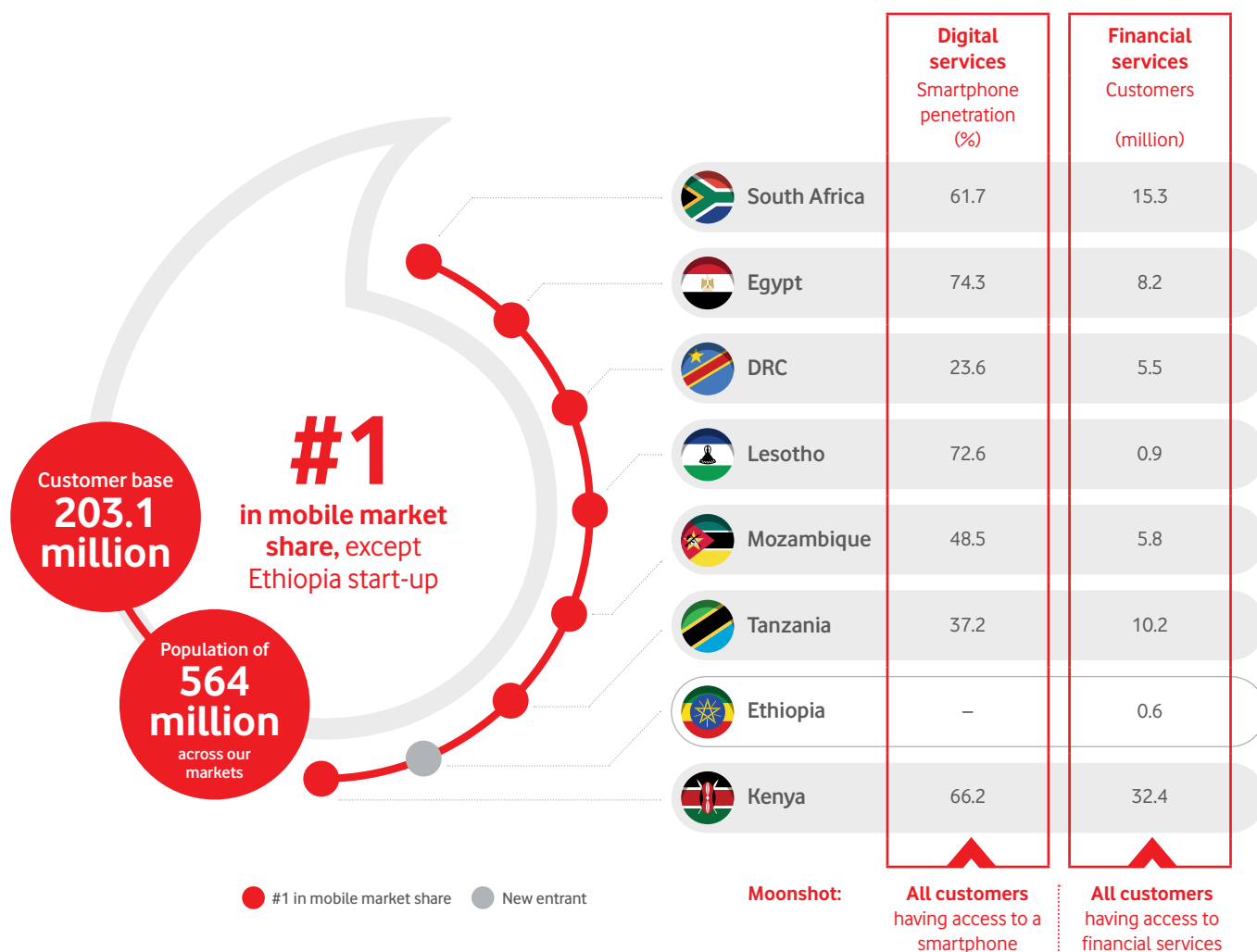
Customers		
million	FY2024	FY2023
South Africa	51.7	44.2
Egypt ¹	48.3	45.5
DRC	21.3	21.0
Lesotho	1.5	1.7
Mozambique	11.7	10.7
Tanzania	19.6	16.7
Ethiopia ²	4.4	2.1
Kenya ³	44.7	43.8
Total	203.1	185.8

Revenue (entity local currency)		
million	FY2024	FY2023
South Africa (R)	88 304	84 715
Egypt ¹ (EGP)	55 381	13 463
DRC (US\$)	663	619
Lesotho (LSL)	1 309	1 204
Mozambique (MZN)	23 259	26 368
Tanzania (TZS)	1 278 216	1 073 018
Safaricom ³ (KES)	349 447	310 905

Revenue (rand equivalent)		
Rm	FY2024	FY2023
South Africa	88 304	84 715
Egypt ¹	32 502	8 252
DRC	12 416	10 531
Lesotho	1 309	1 204
Mozambique	6 814	7 012
Tanzania	9 675	7 838
Other	(426)	(382)
Total	150 594	119 170
Safaricom ³	44 903	43 607

For more information on the countries where Vodacom Business Africa operates, refer to our website on <http://vodacom.com/where-we-operate>

- Consolidated from 8 December 2022.
- The Group, excluding indirect interest via its shareholding in Safaricom, has an effective interest of 5.7% in Safaricom Telecommunications Ethiopia Plc. The Group has indirect exposure through Safaricom's 55.7%. This implies an overall look-through stake of 25.2%.
- Vodacom Group Limited owns 87.5% of Vodafone Kenya Ltd, which in turn holds 39.93% of Safaricom Plc, giving Vodacom an effective holding in Safaricom of 34.94%. The Group's effective interest of 34.94% in Safaricom Plc is accounted for as an investment in associate. Results represent 100% of Safaricom and are for illustrative purposes only.



	South Africa	Egypt	DRC	Lesotho	Mozambique	Tanzania	Ethiopia ² (Safaricom)	Kenya ³ (Safaricom)
Population [†] (million)	61.0	114.5	105.6	2.4	34.9	69.4	129.7	56.2
GDP per capita [†] (USD)	6 180	2 831	657	992	569	1 230	961	2 003
GDP growth estimate [†] (%)	1.5	3.0	5.1	1.4	4.3	5.4	6.8	5.5
Ownership (%)	100	55	51	80	85	75	5.7	34.94
Licence expiry period	2028/2041	2031	2028/2032/2038 ^μ	2036	2038	2031	2036	2024/2026/2032 ^ν
Customers (thousand)	51 654	48 335	21 343	1 545	11 658	19 563	4 351	44 666
ARPU (rand/month)	90 ^Δ	48 ^Δ	46 ^Δ	61 ^Δ	44 ^Δ	42 ^Δ	17 ^β	75 ^β
ARPU (local currency/month)	90 ^Δ	81 ^Δ	2.5 ^Δ	61 ^Δ	151 ^Δ	5 523 ^Δ	51 ^β	622 ^β

Notes:

[†] The Bureau for Economic Research for South Africa and Business Monitor International for all other countries (extraction date: March 2024).

^μ 2028 (2G licence), 2032 (3G licence) and 2038 (4G licence).

[∞] Licence period based on spectrum band rather than technology.

^Δ Total ARPU is calculated by dividing the average monthly service revenue (including fixed line and other service revenue) by the average monthly customers during the period.

^β Total ARPU is calculated by dividing the average monthly service revenue (excluding fixed line and other service revenue) by the average active monthly customers during the period.